



NATIONAL WEATHER SERVICE

Building a Weather-Ready Nation

Spring Weather Safety



Know Your Risk, Take Action, Be a Force of Nature

weather.gov/safety

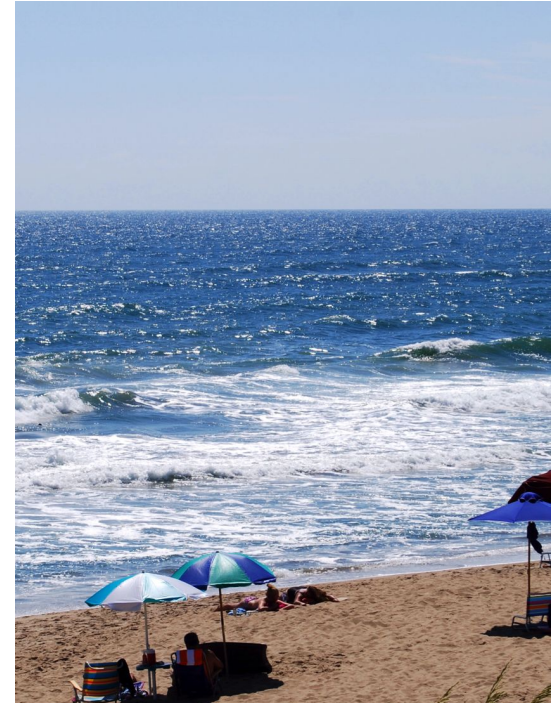
Spring Weather Hazards

- Rip Currents & Beach Hazards
- Tornadoes
- Thunderstorms
- Lightning
- Flooding
- Tsunamis
- Heat



Rip Currents & Beach Hazards

- Beach flags help alert swimmers about potential dangers such as high surf or strong rip currents
- Look for beach flags before you enter the water
- If caught in a rip current, swim parallel to the beach to escape

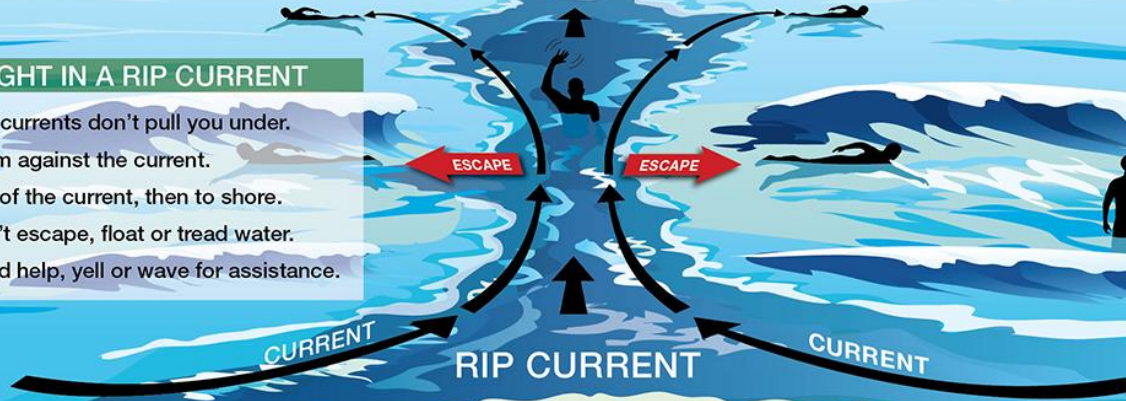


RIP CURRENTS

KNOW YOUR OPTIONS

IF CAUGHT IN A RIP CURRENT

- Relax, rip currents don't pull you under.
- Don't swim against the current.
- Swim out of the current, then to shore.
- If you can't escape, float or tread water.
- If you need help, yell or wave for assistance.



Rip currents are powerful currents of water moving away from shore. They can sweep even the strongest swimmer away from shore. If at all possible, swim near a lifeguard.

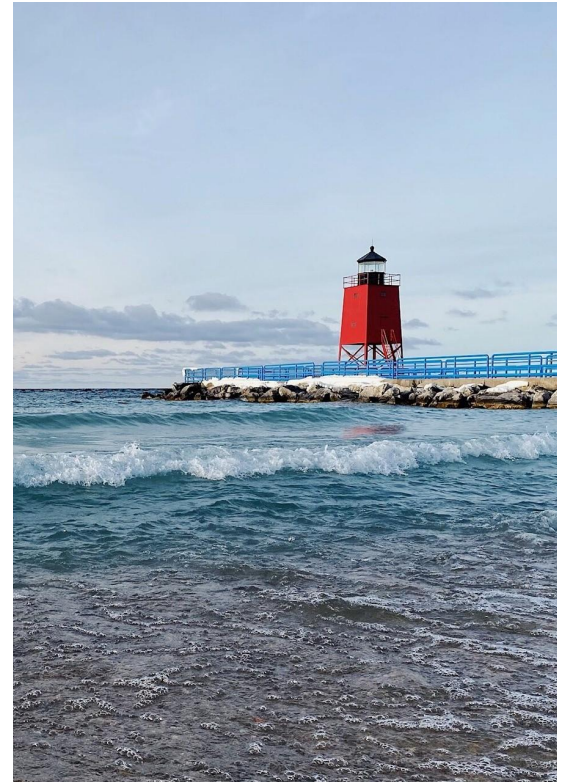


NATIONAL WEATHER SERVICE

[weather.gov/safety](https://www.weather.gov/safety)

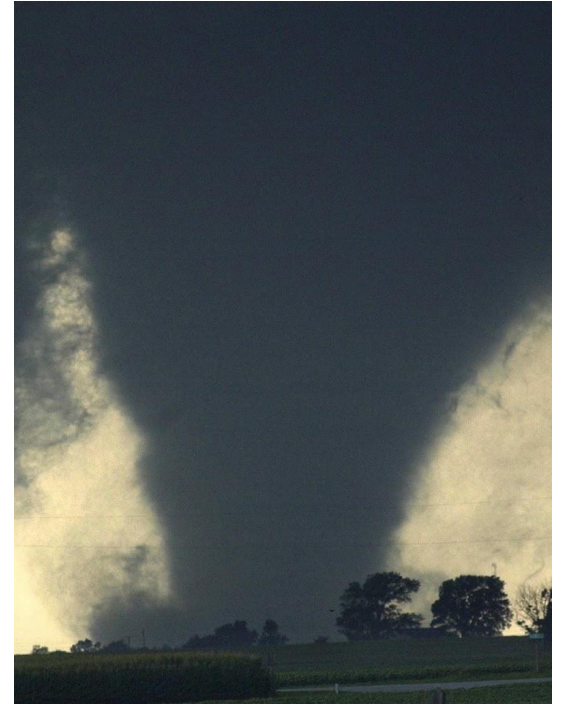
Other Dangerous Currents

- Longshore currents
- Outlet currents
- Tidal currents
- Structural currents
- Learn more about these at weather.gov/safety/dangerous-currents



Tornadoes

- Winds from tornadoes can exceed 200 mph
- Flying debris is very dangerous and, most often, the cause of death and injuries
- Seek a sturdy shelter in a basement, storm shelter, or interior room away from windows on the lowest floor, and cover your head
- The most dangerous locations to be in during a tornado are mobile homes and vehicles



NWS Tornado Products

TORNADO WATCH

A Tornado Watch is issued when **a tornado is possible.**

Know your safe place (storm shelter, basement, interior hall away from windows). Be ready to act quickly if a Warning is issued.

Be Prepared.

TORNADO WARNING

A Tornado Warning is issued when **a tornado is happening or about to happen.**

Immediately seek shelter in your safe place!

Take Action!



weather.gov



NATIONAL WEATHER SERVICE

weather.gov/safety

NWS Tornado Products

"THIS IS A PARTICULARLY DANGEROUS SITUATION..."

Have you ever noticed the wording "THIS IS A PARTICULARLY DANGEROUS SITUATION" in some of the severe weather watches issued by the NWS Storm Prediction Center?



This wording is used in **Tornado Watches** for rare situations when long-lived and intense tornadoes are likely.

This enhanced wording may also accompany **Severe Thunderstorm Watches** for widespread and exceptionally intense straight-line wind events.

BE PREPARED:

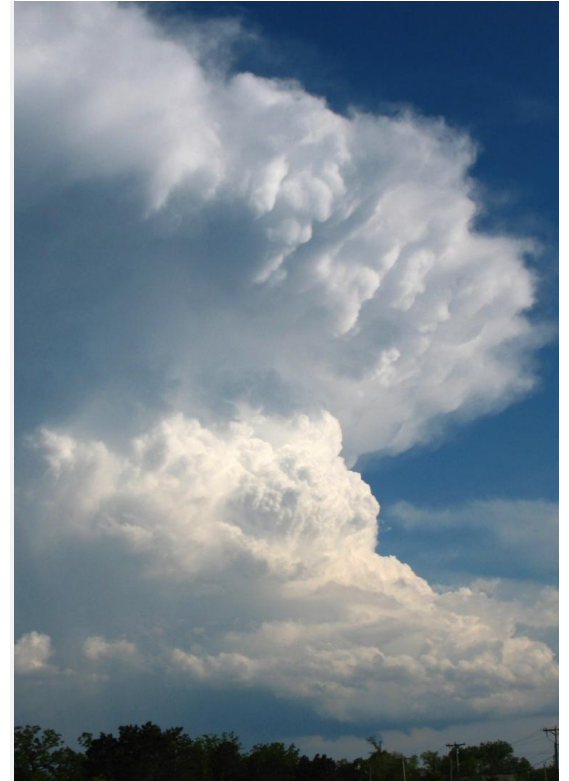


- Review your severe weather safety procedures
- Know the safest place to seek refuge ahead of time
- Consider canceling or postponing outdoor activities
- Have multiple ways to receive a warning
- Inform others of the heightened risk



Severe Thunderstorms

- Severe thunderstorms produce damaging wind and/or large hail (along with lightning and tornadoes)
- Take shelter in a sturdy structure away from windows – a basement or cellar would be best
- Being in a vehicle is safer than being outside



NWS Severe Thunderstorm Products

THUNDERSTORM WATCH

A Severe Thunderstorm Watch is issued when **a severe thunderstorm is possible**.

Stay tuned to forecast updates, monitor sky conditions, and know where to take shelter.

Be Prepared.

THUNDERSTORM WARNING

A Severe Thunderstorm Warning is issued when **a severe thunderstorm is happening or about to happen**.

Take shelter immediately!

Take Action!



weather.gov



NATIONAL WEATHER SERVICE

weather.gov/safety

Lightning

- All thunderstorms produce lightning
- Lightning kills an average of 20 people every year
- Take shelter inside a sturdy enclosed structure
- A hard-topped vehicle is also a safe location



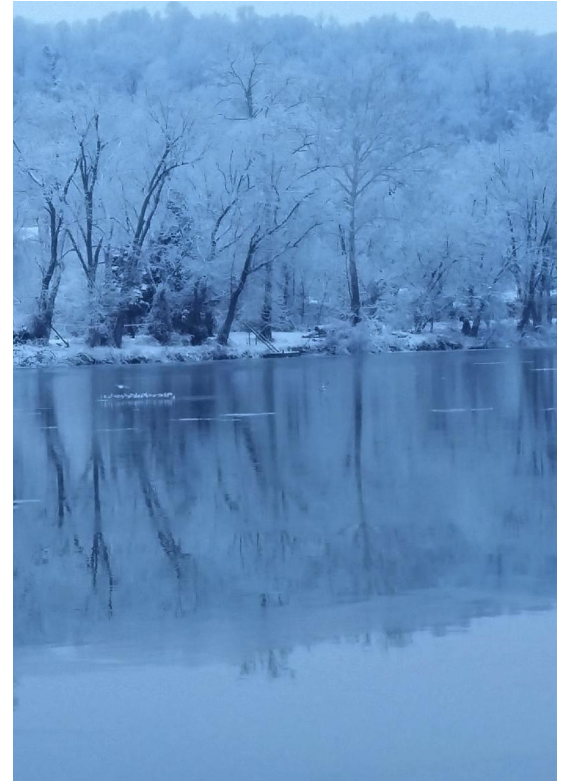
Flooding

- Flooding can be caused by snowmelt, ice jams, and heavy rain
- More than half of all flood fatalities are vehicle-related
- Never drive into flooded roadways or around barricades



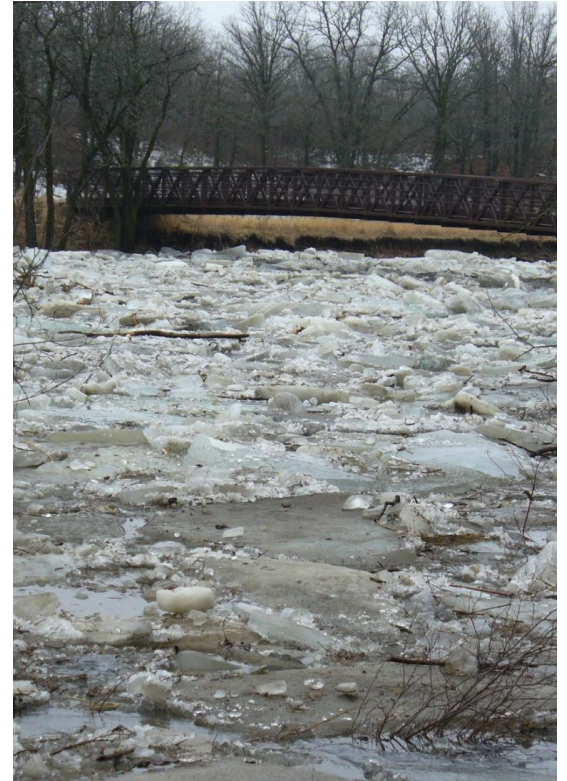
Snow Melt

- Water stored in the snowpack goes into rivers when the snow melts in spring
- Spring flooding can affect large river basins
- Never drive through flood waters, and obey road signs



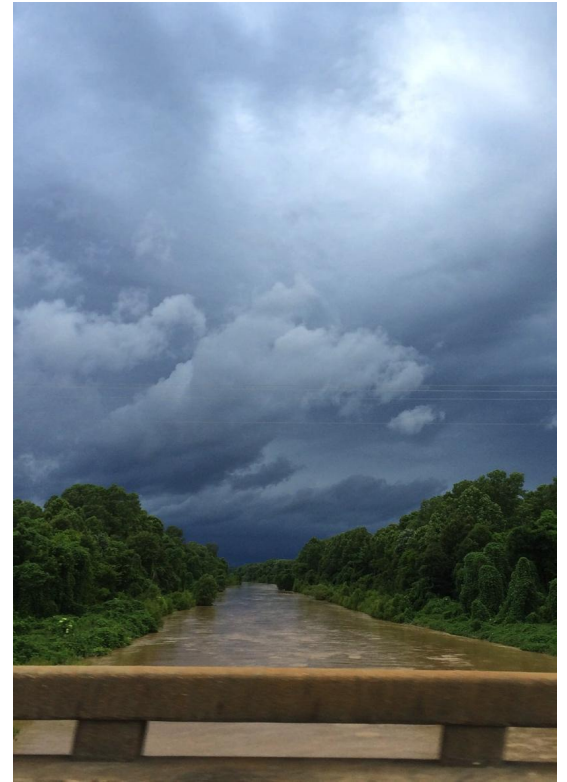
Ice Jams

- Ice jam flooding occurs when chunks of ice build up and prevent water from flowing downstream
- This can lead to rapid rises upstream from the ice jam
- Never drive through flood waters



Heavy Rain

- Heavy rain on saturated soil can lead to flooding
- More than half of all flood fatalities are vehicle-related
- It only takes 12 inches of rushing water to carry away a small car
- Turn around, Don't drown!



NWS Flood Products

FLOOD WATCH

A Flood Watch is issued when **flooding is possible.**

Stay tuned to trusted news sources and be ready to seek higher ground.

Be Prepared.



weather.gov

FLOOD WARNING

A Flood Warning is issued when **flooding is happening or about to happen.**

Move to higher ground immediately!
Never drive or walk through floodwaters.

Take Action!



NATIONAL WEATHER SERVICE

weather.gov/safety

Tsunamis

- A tsunami is one of the most powerful and destructive forces of nature
- Know nature's warnings: strong or long earthquake, sudden ocean rise or fall, ocean roar
- Respond to warnings: move to high ground or inland



NWS Tsunami Products

TSUNAMI WATCH

A Tsunami Watch is issued when **a tsunami is possible.**

Know your evacuation route.
Have a plan and be ready to act quickly if a Warning is issued.

Be Prepared.

TSUNAMI WARNING

A Tsunami Warning is issued when **a tsunami is happening or about to happen.**

Move to higher ground or further inland immediately!

Take Action!



weather.gov

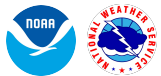
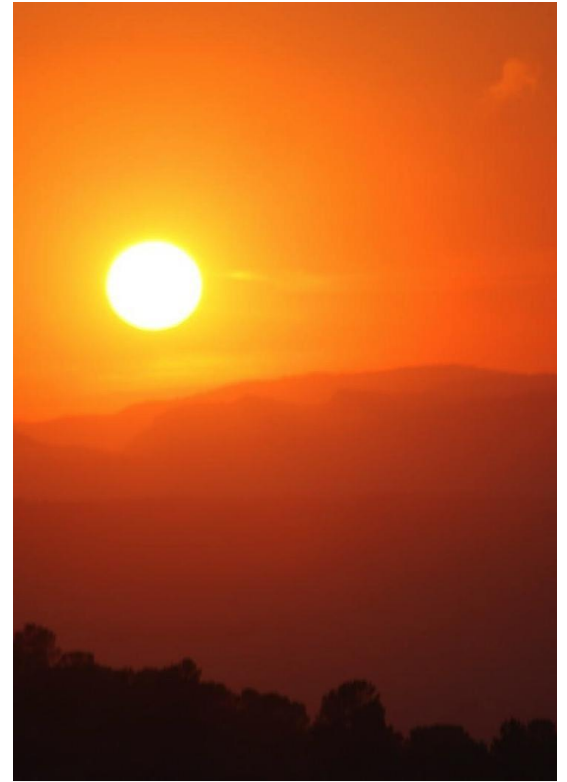


NATIONAL WEATHER SERVICE

weather.gov/safety

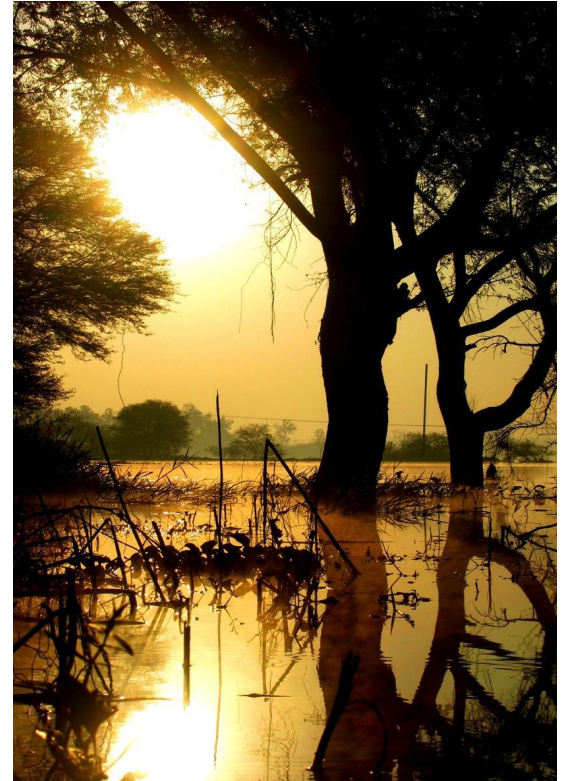
Heat Safety

- Even in the spring, heat with or without humidity can take a toll on the body.
- Know the signs of heat illness. Types of heat illnesses include heat cramps, heat exhaustion, and heat stroke.
- Reschedule outdoor work and strenuous activities for another day or for the coolest time of day.
- Stay hydrated by drinking plenty of water.



Heat Safety

- Sunburn and heat illness can be avoided
- Apply and reapply sunscreen to protect your skin from sunburn
- Stay in air conditioning and out of the sun if possible
- NEVER leave children, the elderly, or pets in parked, unattended vehicles



NWS Heat Products

EXCESSIVE HEAT WATCH

An Excessive Heat Watch is issued when **dangerous heat is possible**.

Reschedule outdoor activities in the coming days. Make sure that children, the elderly, and pets have a place to cool off during the heat.

Be Prepared.

EXCESSIVE HEAT WARNING

An Excessive Heat Warning is issued when **dangerous heat is happening or about to happen**.

Avoid heavy activity & direct sunlight. Stay hydrated, find a cool indoor place, and check on children, elderly & pets.

Take Action!



weather.gov



NATIONAL WEATHER SERVICE

[weather.gov/safety](https://www.weather.gov/safety)

Spring Safety Resources

weather.gov/safety/ripcurrent
weather.gov/safety/tornado
weather.gov/safety/thunderstorm
weather.gov/safety/lightning
weather.gov/safety/flood
weather.gov/safety/tsunami
weather.gov/safety/heat



NATIONAL WEATHER SERVICE

weather.gov/safety