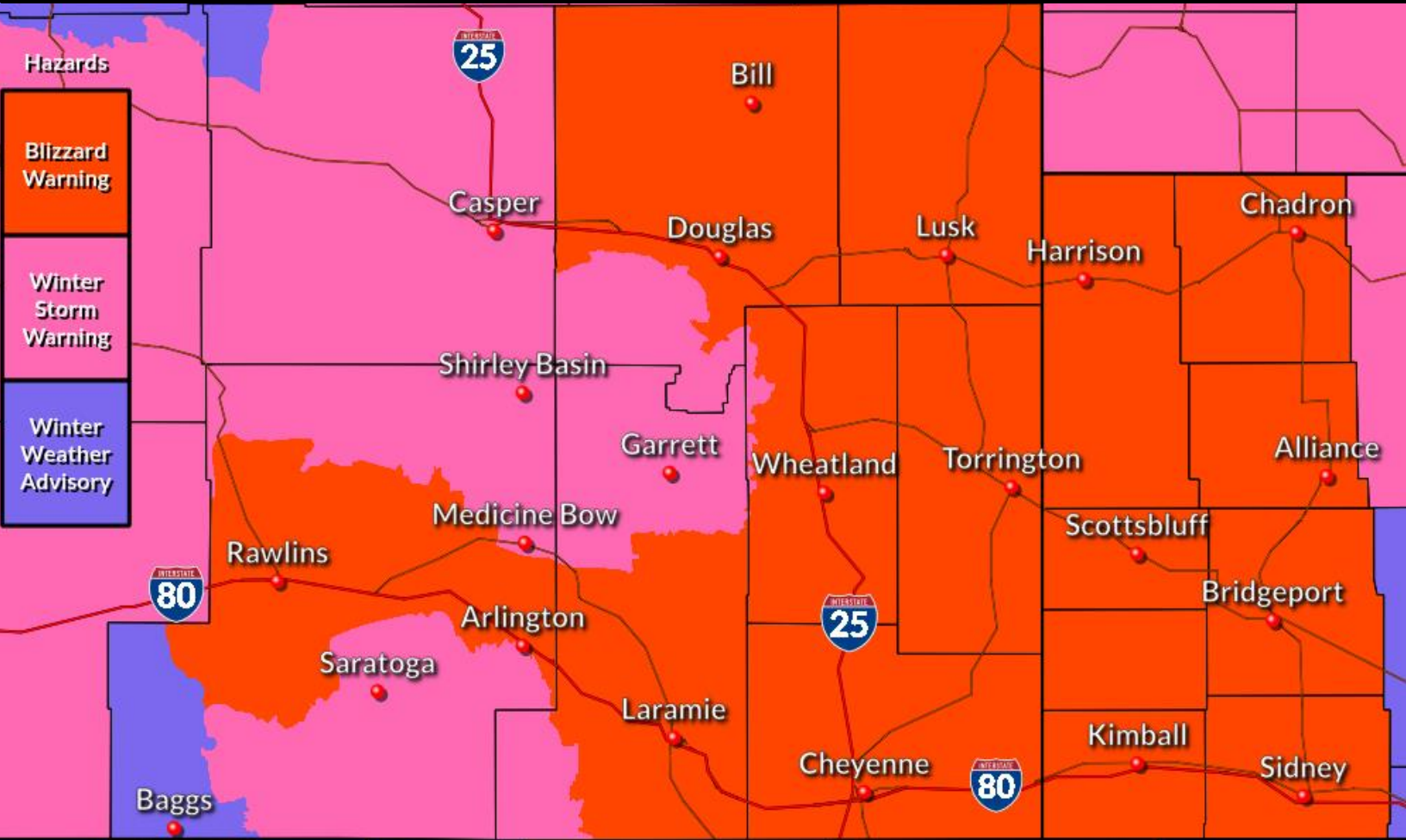




# Blizzard and Winter Storm Warnings Today through Monday Morning



## Messages of the Day:

- Winter Storm Warnings currently in effect and continue through Monday morning for the potentially historic snow storm for southeastern Wyoming and the Nebraska Panhandle. Blizzard Warnings will begin tonight.
- Worst conditions are forecast to occur Saturday afternoon through Sunday evening due to a combination of heavy snow and gusty winds.

## Important Forecast Changes

- **NEW** Blizzard Warnings have been expanded to Cheyenne, Bridgeport, Harrisburg, Kimball, and Sidney due to increased wind gusts potential across the entire region.



# Winter Weekend Timeline



## Winter Weekend Impacts



**What:**

**Heavy Snowfall and Blizzard Conditions**



**Where:**

Across many areas in southeastern Wyoming & portions of the Nebraska Panhandle

**Impacts:**

**Power outages and extreme hazardous travel likely. Widespread areas of heavy & blowing snow. White-out conditions & low visibility.**

Hazard Scale:



**Hazards:** Historic Winter Storm Possible. Heavy snowfall with strong wind gusts up to 35-60 MPH possible for southeastern Wyoming and the northern Panhandle. Extreme impacts are expected across most of the region.



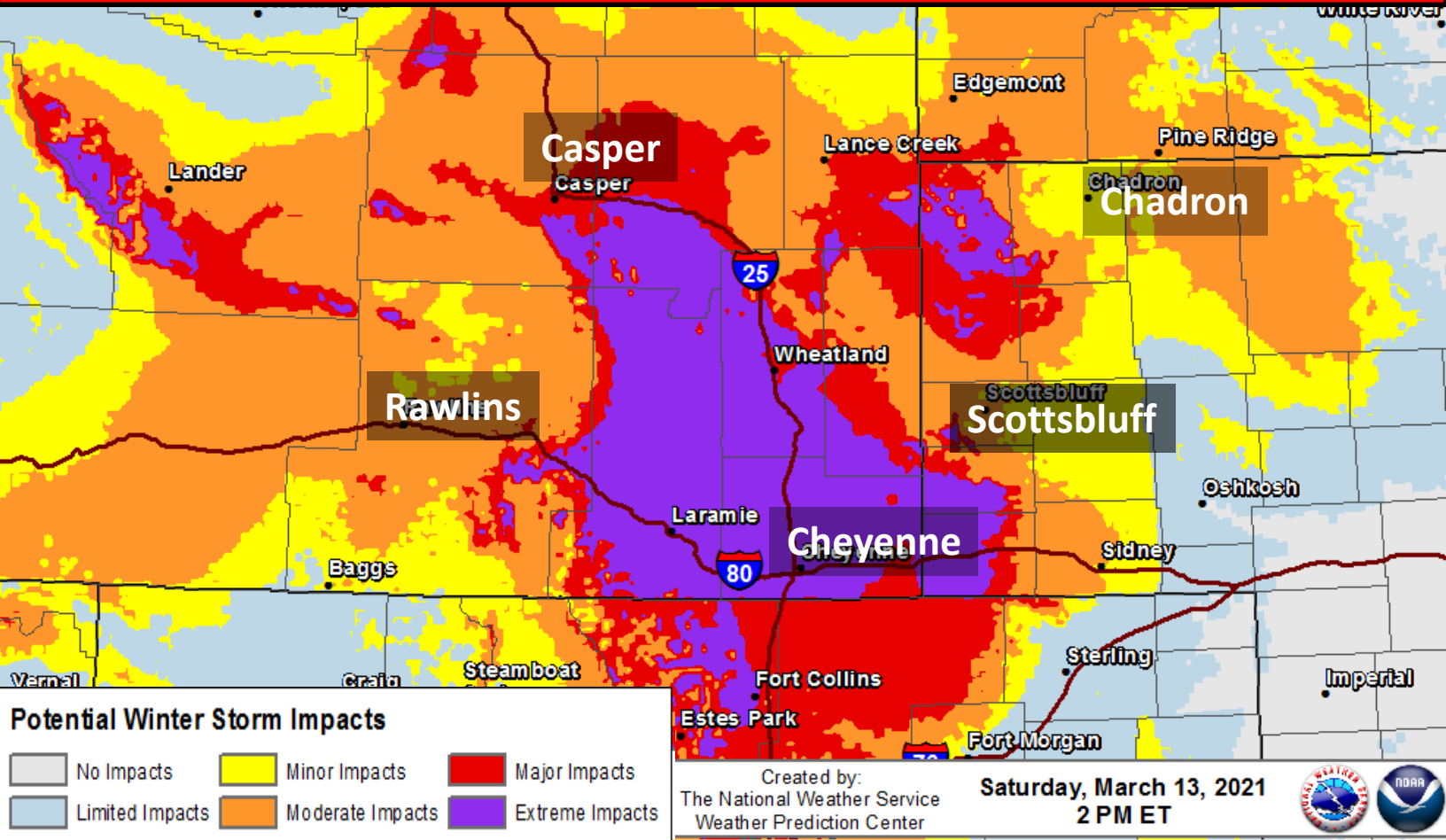
**Timing & Duration:** Increasing snowfall amounts Saturday afternoon. Highest impacts and greatest snowfall rates expected mid-day Saturday into Sunday night.



**Impacts:** Heavy, snow-packed, and icy roads, as well as gusty winds and low visibilities, especially Saturday afternoon and Sunday. Cold wind chills will lead to extreme conditions Sunday morning. May need to protect area livestock and avoid prolonged outdoor exposure. Wind chills will be 15 degrees and below.



## Winter Storm Severity Index



**Hazards:** Historic Winter Storm Possible. Heavy snowfall with strong wind gusts up to 35-60 MPH possible for southeastern Wyoming and the northern Panhandle. Extreme impacts are expected across most of the region.



**Timing & Duration:** Mixed light precipitation today. Increasing snowfall amounts Saturday afternoon. Highest impacts and greatest snowfall rates expected mid-day Saturday into Sunday evening.

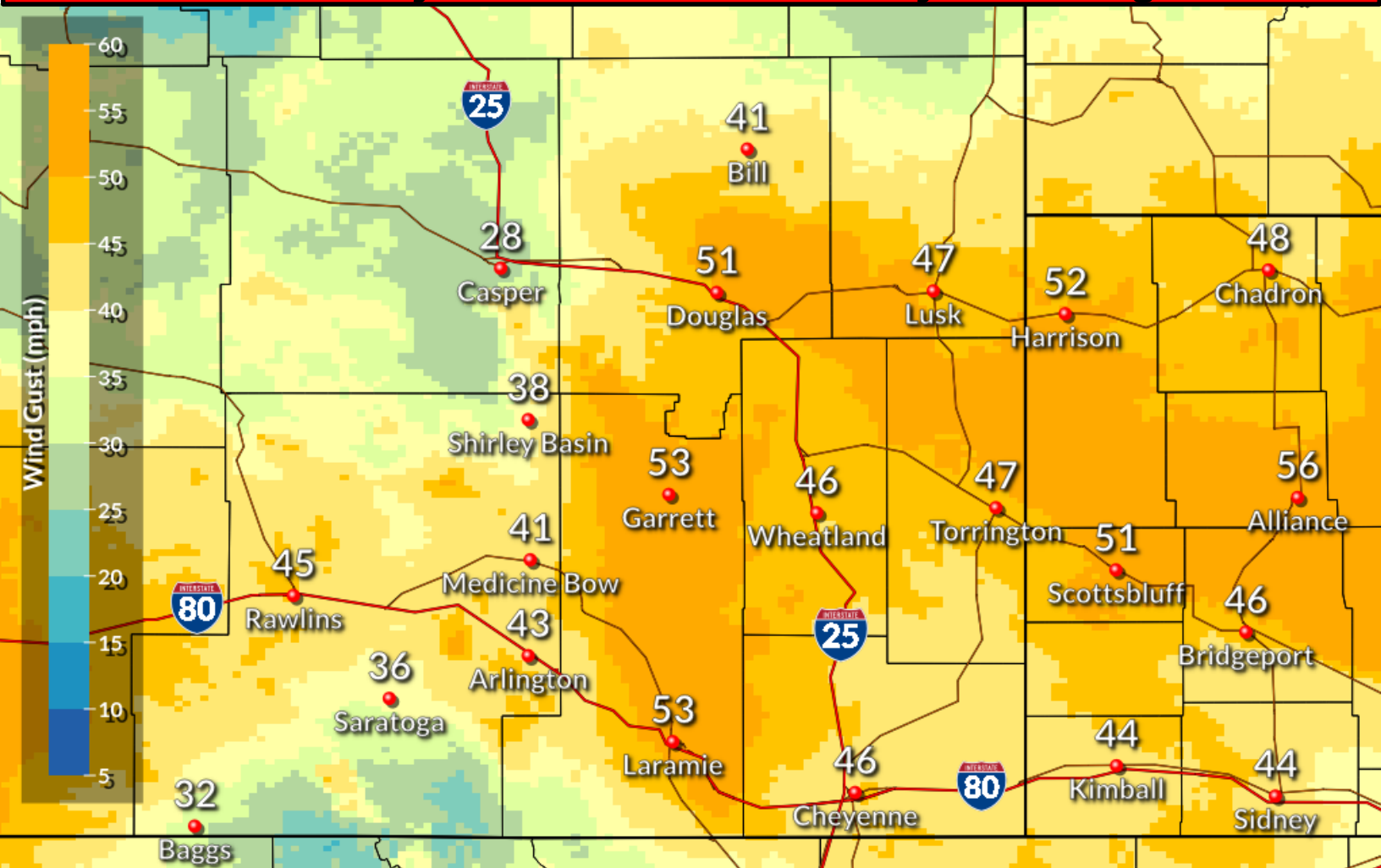


**Impacts:** Heavy, snow-packed, and icy roads, as well as gusty winds and low visibilities, especially Saturday afternoon and Sunday. Cold wind chills will lead to extreme conditions Sunday morning. May need to protect area livestock and avoid prolonged outdoor exposure. Wind chills will be 15 degrees and below.





## Potential easterly winds with strong wind gusts Saturday Afternoon – Sunday Evening



**Hazards:** Blizzard conditions expected Saturday night through Sunday. Blizzard warnings will begin Saturday night and will likely need to be expanded north and south. Widespread heavy snowfall will combine with strong easterly wind gusts up to 35-60 MPH. Significant snow accumulations across Interstate 25 from Cheyenne to Douglas and Interstate 80 from Arlington to Sidney.



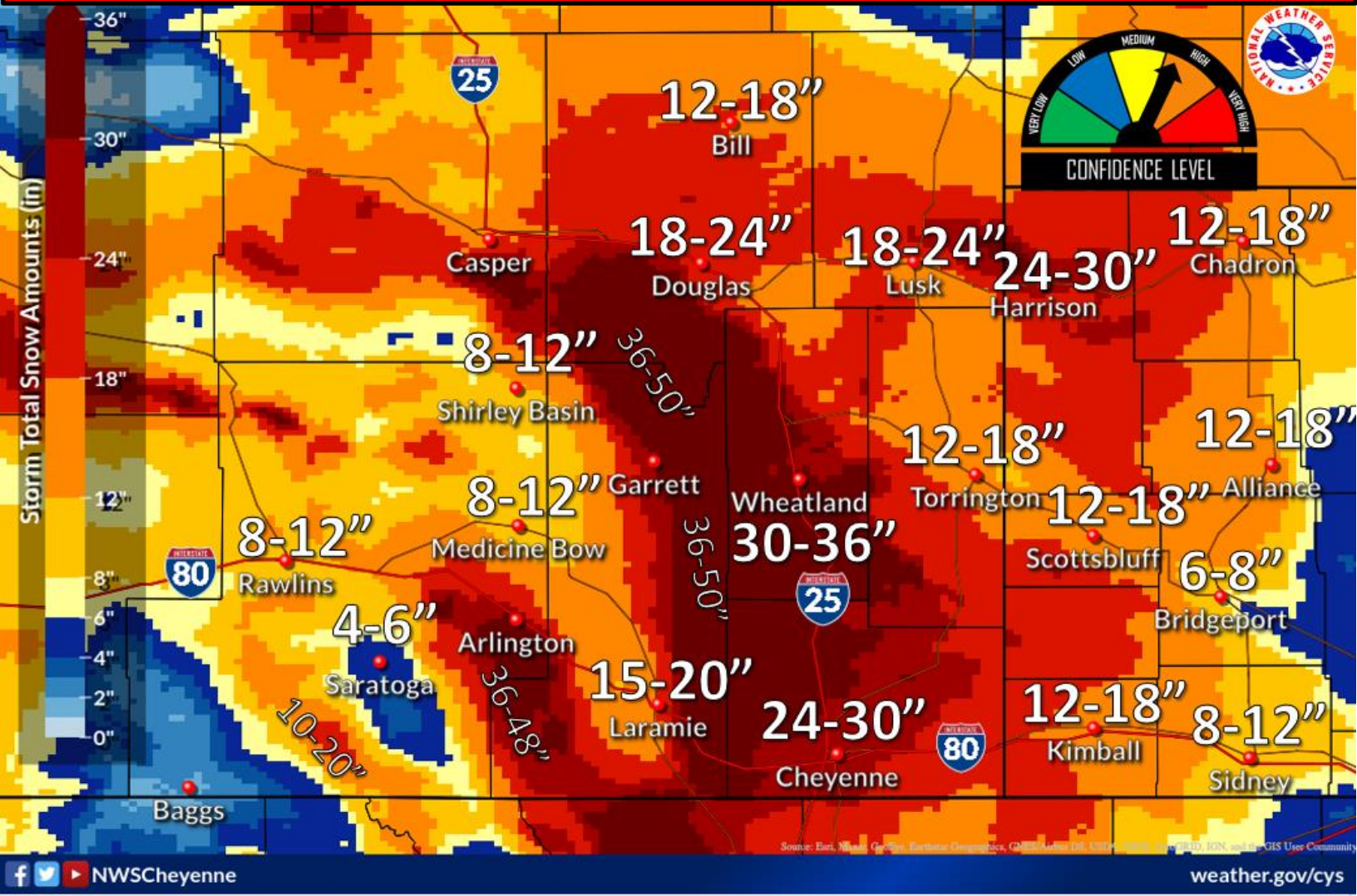
**Timing & Duration:** Starting Saturday night through Sunday evening.



**Impacts:** Possible power outages and hazardous travel conditions. Widespread whiteout conditions with reduced visibility and continuous heavy snowfall.



# Potential Snowfall Friday PM – Monday Morning



Source: East, West, Central, Eastern, and Southern Regions, NWS Cheyenne, CO, WY, UT, AZ, NM, OK, KS, NE, SD, IA, MO, IL, IN, OH, PA, NY, NJ, DE, MD, VA, NC, SC, GA, FL, HI, AK, and the NWS User Community. [weather.gov/cys](https://www.weather.gov/cys)



**Hazards:** Widespread heavy snowfall. Significant snow accumulations across Interstate 25 from Cheyenne to Douglas and Interstate 80 from Arlington to Sidney. Strong wind gusts up to 35-60 MPH possible for all areas Saturday night into Sunday evening. Extreme impacts are expected across most of the region.



**Timing & Duration:** Snow rates pick up Saturday afternoon through Monday morning. Highest impacts and greatest snowfall rates expected mid-day Saturday into Sunday evening. Panhandle daytime rain amounts have lowered snow totals and increased uncertainty.

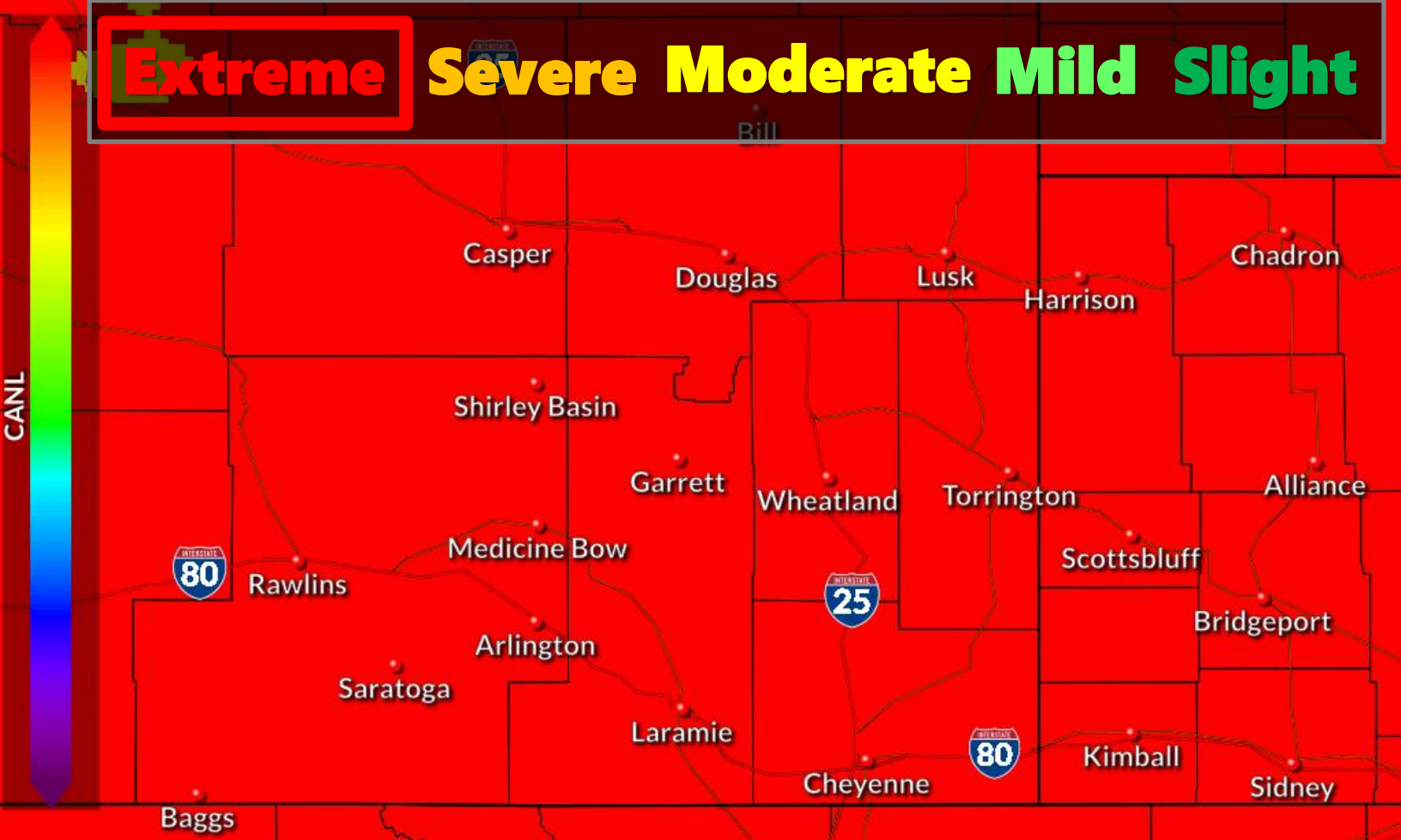


**Impacts:** Possible power outages and hazardous travel conditions. Widespread whiteout conditions with reduced visibility and continuous heavy snowfall. Blizzard conditions possible starting Saturday afternoon into Sunday. Travel could be impossible at times.





# Cold Air Advisory for Newborn Livestock Ranchers Take Action!



**Hazards:** Significant snow accumulations across Interstate 25 from Cheyenne to Douglas and Interstate 80 from Arlington to Sidney. Strong easterly wind gusts up to 35-60 MPH likely for all areas Saturday night through Sunday. Areas in the Panhandle may experience daily rain during the peak heating period.



**Timing & Duration:** Snow during the day Saturday with impacts continuing through Monday morning. Highest impacts and greatest snowfall rates expected mid-day Saturday into Sunday evening.



**Impacts:** Area ranchers can expect severe impacts to newborn livestock. Snow will also be plentiful and heavy, laden with liquid. Snow drifts will be a hazard to livestock. Liquid precip could be detrimental. Take action to protect your herd!



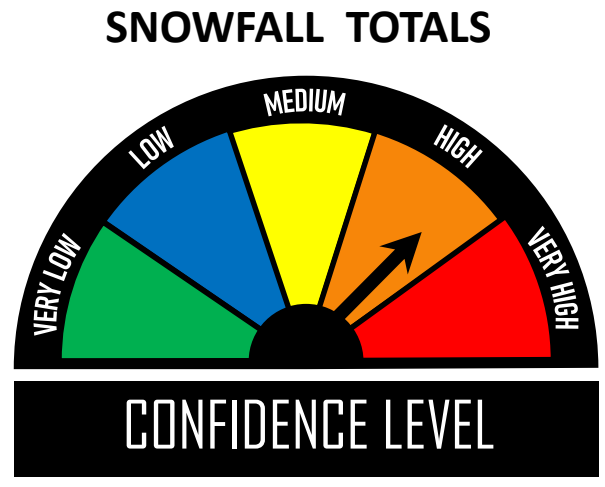
## Message of the Day:

- Remember: Snowfall totals will vary from day to day. There is high confidence of snow accumulations greater than one foot for southeastern Wyoming.
- Confidence has increased for this weekend event with possible strong wind gusts up to 35-60 MPH and heavy snowfall, mainly Saturday night through Sunday evening.
- Be sure to be prepared if traveling or recreating outside. Anticipate travel delays.
- Area ranchers can expect severe impacts to newborn livestock, and livestock in general. Take action to protect your herd!

**Winter Travel**  
Road Trip Safety Tips

**PACK AN EMERGENCY SUPPLY KIT FOR YOUR VEHICLE**

MOBILE PHONE, CHARGER, BATTERIES	SAND OR CAT LITTER FOR TRACTION
BLANKETS/SLEEPING BAGS	PORTABLE SHOVEL
FLASHLIGHT WITH EXTRA BATTERIES	WINDSHIELD SCRAPER AND BRUSH
FIRSTAID KIT	TOOL KIT WITH A KNIFE
HIGH-CALORIE, NON-PERISHABLE FOOD	BATTERY BOOSTER CABLES
EXTRA CLOTHING TO KEEP DRY	WATER CONTAINER



### Preparedness:

- A **Winter Storm Watch** is issued when confidence is medium that a winter storm could produce heavy storm, sleet, or freezing rain and cause significant impacts.
- A **Winter Storm Warning** is issued when a combination of heavy snow, blowing snow, and possibly ice mixed with snow is expected to impact the area. *Time to act!*
- A **Blizzard Warning** is issued when the combination of strong wind, low visibility, and heavy snow will significantly impact daily life.

Find out more information on our web page: [www.weather.gov/cys/](http://www.weather.gov/cys/)  
 The State has an Emergency Management page set up here:  
<https://hls.wyo.gov/>

Follow us on Facebook and Twitter for more up to date information:



@NWSCheyenne



NWS Cheyenne

